

CERTIFICATE OF LOCATION OF GOVERNMENT CORNER

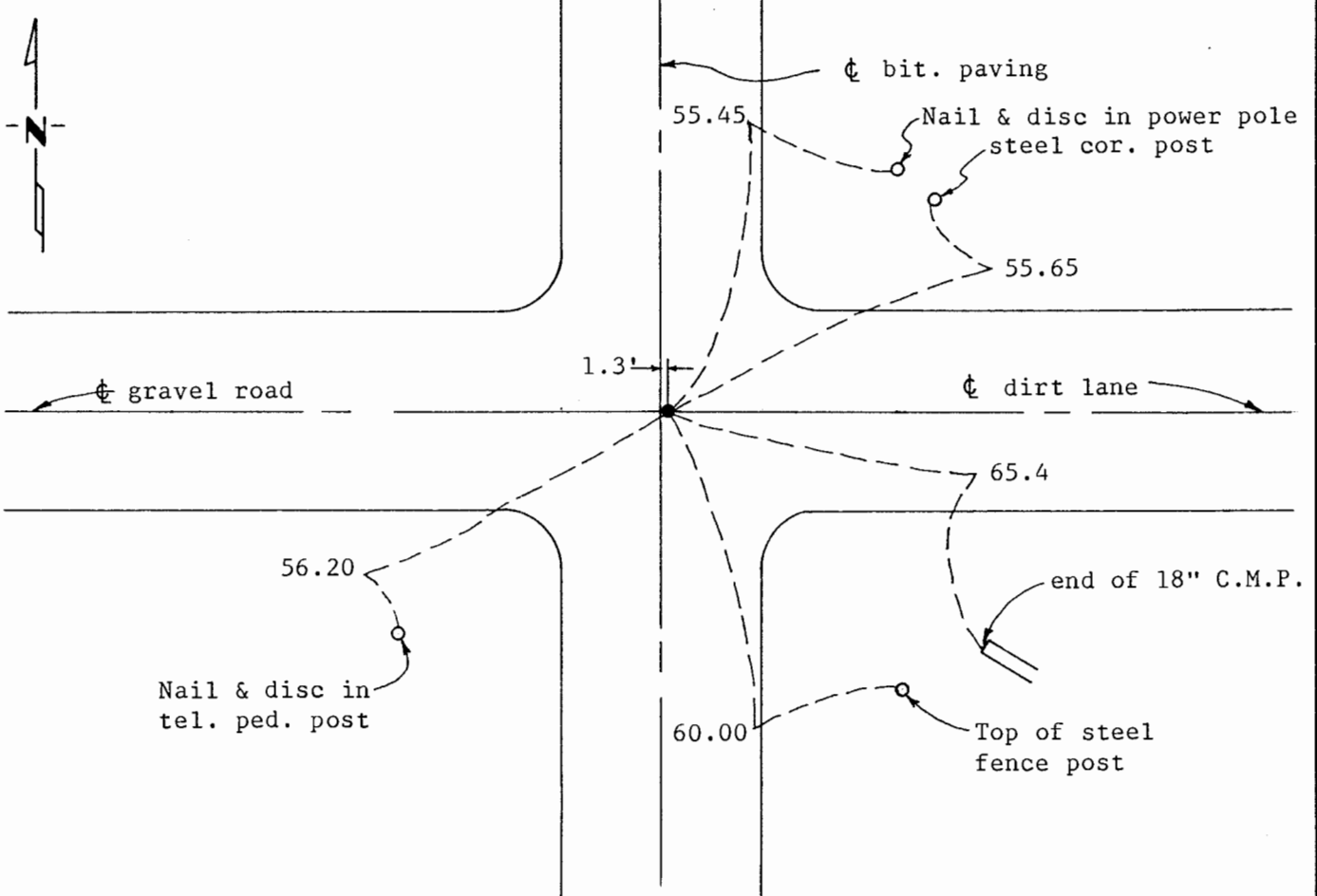
Northwest Corner of Section 10, Township 108 N., Range 42 W., 5th P.M.

STATE OF MINNESOTA, County of Murray

At the corner location shown on the sketch:

- On _____ found a _____
DATE
- left monument as found, lowered monument, removed monument (explain)
- On 12-14-87 placed a P.K. Nail in the bituminous paving from previous ties.
DATE

SKETCH OF REFERENCE TIES



Statement of evidence relative to this corner location is on back of page.

I hereby certify that this document and the data contained herein was prepared by me or under my direct supervision.

John Madson 2-1-88
SIGNATURE DATE

Registration No. 13593

Land Surveyor, Professional Engineer

County Surveyor, County Engineer

OFFICE OF THE COUNTY RECORDER

County of Murray

I hereby certify that this document was filed in the Co. Recorders office at 10 A.M. on the 2nd day of February A.D., 1988

County Recorder James V. Johnson

By _____, Deputy

DOCUMENT NO. _____

Statement of Evidence: N.W. Cor. Sec. 10-108-42, Murray County

The corner was originally established during the Public Land Survey of Skandia Township during the 1860's.

Records from the Murray County Surveyors Book described the corner as a stone at the government corner.

Records from the Murray County Highway Department dated 1934 identified the corner as a stone (the stone was raised up at that time). In 1970 the stone was located again and a steel pin was placed above the stone. The ties were as follows: 56.20 S.W. = Nail & disc in telephone pedestal post; 55.45 N.E. = Nail & disc in power pole; 60.00 S.E. = Top of steel post.

On December 14, 1987, I checked for metal in the bituminous paving, but detected nothing. I set a P.K. Nail in the bituminous paving from previous tie information from the Murray County Highway Department (surface).

A handwritten signature in dark ink, appearing to be "J. M. ...", located in the lower right quadrant of the page.